

# BFGoodrich Highway Control D2

A DRIVE TIRE DESIGNED TO PROVIDE LONG, EVEN WEAR AND FUEL EFFICIENCY TO KEEP YOUR FLEET UP AND RUNNING FOR THE LONG HAUL.



[business.bfgoodrichtires.com](http://business.bfgoodrichtires.com)

**BFGoodrich**  
Tires

# BFGoodrich Highway Control D2



## GO THE DISTANCE

The BFGoodrich Highway Control D2 tire is a durable drive tire built for long tread life and dependable performance, designed to keep fleets running smoothly over the long haul.

### LONG TREAD LIFE

Expect long tread life and exceptional even wear performance.

- Designed to deliver more miles than the BFGoodrich DR444 tire.
- Proven tread pattern for long haul use.



### MULTIPLE RETREAD LIVES

Legendary BFGoodrich casing.

- Excellent retreadability
- Durability keeps you up and running.

## 5 YEAR<sup>(1)</sup>

5 Year / 2-Retread Manufacturer's Limited Casing Guarantee

Full list of terms and conditions can be found [HERE](#)

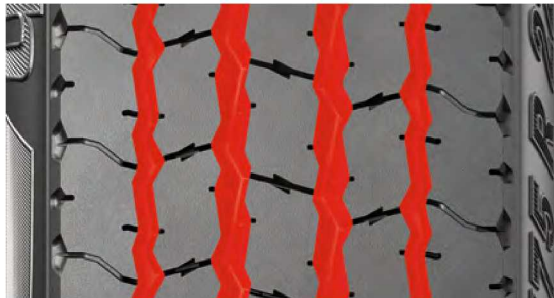
### EVEN WEAR OVER THE LONG HAUL

If you are not completely satisfied with the BFGoodrich Highway Control D2 tire mileage performance in the first year or before 50% of its usable tread life – whichever comes first – we will reimburse 50% of your acquisition price per tire.<sup>(2)</sup>



### ALL SEASON CONFIDENCE

Proven, rugged tread pattern that delivers great traction.



### FUEL EFFICIENCY

- 23% lower Rolling Resistance vs the BFGoodrich DR444 tire<sup>(3)</sup>



Size	Load Range	Catalog Number	Tread Depth (32nds)	Max. Speed (4)		Loaded Radius		Overall Diameter		Overall Width (5)		Approved Wheels (Measuring wheel listed first)		Min. Dual Spacing (5)		Revs Per Mile	Max Load Per Tire Single				Max Load Per Tire Dual			
				mph	km/h	in.	mm.	in.	mm.	in.	mm.	in.	mm.	in.	mm.		lbs.	psi	kg.	kPa	lbs.	psi	kg.	kPa
11R22.5	G	60170	27	75	120	19.6	497	41.8	1062	11.2	284.3	8.25, 7.5	12.5	318	495	6175	105	2800	720	5840	105	2650	720	
11R22.5	H	39386	27	75	120	19.6	499	41.9	1064	11.2	285.4	8.25, 7.5	12.5	318	494	6610	120	3000	830	6005	120	2725	830	
295/75R22.5	G	89967	27	75	120	19.0	483	40.5	1030	11.3	286.2	8.25, 9.0	12.2	311	510	6175	110	2800	760	5675	110	2575	760	
11R24.5	G	03099	27	75	120	20.5	520	43.7	1110	11.2	283.3	8.25, 7.5	12.5	318	473	6610	105	3000	720	6005	105	2725	720	
11R24.5	H	08992	27	75	120	20.5	521	43.7	1111	11.2	284.8	8.25, 7.5	12.5	318	473	7160	120	3250	830	6610	120	3000	830	

Note: Wheel listed first is the measuring wheel.

(1) 5 Year / 2-Retread Limited Casing Guarantee when retreaded by an authorized Michelin Retread Technologies (MRT) Dealer or an Oliver Retread dealer. Full list of terms and conditions can be found [HERE](#).

(2) For full list of terms and conditions, click [HERE](#).

(3) Based on internal rolling resistance tests using ISO 28580 test method comparing the BFGoodrich DR444 tire vs BFGoodrich Highway Control D2 tire in the 275/80R22.5 LRG size. Actual fuel saving results may vary, and may be impacted by many factors, to include road conditions, weather, environment, combination of steer and trailer tires used, driving habits, tire size, equipment and maintenance.

(4) Exceeding the lawful speed limit is neither recommended nor endorsed.

(5) Tire section widths and overall widths will change 0.1 inch (2.5 mm) for each 1/4 inch change in wheel width. Minimum dual spacing should be adjusted accordingly.

BFGoodrich Commercial Truck Tires reserves the right to change product specifications at any time without notice or obligation.

MNA, Inc. continually updates its product information to reflect any changes in Industry Standards. Printed material may not reflect the current Load and Inflation information. Please visit [business.bfgoodrichtrucktires.com](http://business.bfgoodrichtrucktires.com) for the latest product information. The actual load and inflation pressure used must not exceed the wheel manufacturer's maximum conditions. Never exceed a wheel manufacturer's limits without permission from the component manufacturer.

Application	Highway	Regional	Urban	Coach/Bus	On/Off-Road
Position	Steer	Drive		Trailer	

Recommended Application  Acceptable Application

» Take control today at:  
[business.bfgoodrichtrucktires.com](http://business.bfgoodrichtrucktires.com)

To Find Your Nearest BFGoodrich Commercial Truck Tire Dealer  
Call: United States, 1-877-788-8899; Canada, 1-888-871-6666  
Or Visit: [business.bfgoodrichtrucktires.com](http://business.bfgoodrichtrucktires.com)

